

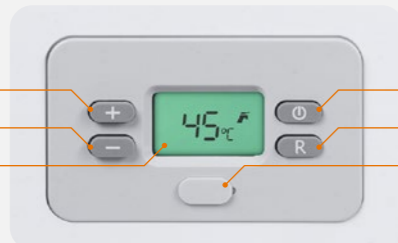
AquWa 12 Hermetic Gas Water Heater Features



- ▶ 21 kW water heating power
- ▶ 12 liters of comfortable hot water production per minute
- ▶ A class energy efficiency
- ▶ High efficiency up to 89.2% ($\eta_{\text{v-min}}$)
- ▶ Domestic hot water in L (Large) profile
- ▶ Low exhaust gas emissions compatible with ErP directives (NOx class 6) provided by water-cooled stainless-steel burner
- ▶ Durable and environment-friendly copper heat exchanger
- ▶ Comfortable use as a result of wide modulation range between 21 kW to 9 Kw
- ▶ 35 - 60 °C water temperature adjustment range
- ▶ Precise demand detection thanks to the turbine water flow sensor
- ▶ 48 dB low sound level
- ▶ Takes up less space with its compact dimensions and small volume [0.0519 m³ = 51.9 Liters]
- ▶ Electricity consumption only as much as a light bulb thanks to variable speed fan
- ▶ Only 3 W electric consumption in stand-by mode
- ▶ Digital LCD screen: ± 1 °C temperature adjustment sensitivity, Error Diagnostic System, easy "Error RESET Feature"
- ▶ Operation range between 195-253 V AC
- ▶ Compatible with solar energy heating systems containing storage tanks
- ▶ Flue length up to 4 meters horizontally and vertically
- ▶ 2 years warantee
- ▶ Domestic design and production (Bursa)

Modern and Elegant Control Panel

- Water Temperature Increase (+)
- Water Temperature Decrease (-)
- LCD Screen
- On/ Off
- Reset
- Service Port



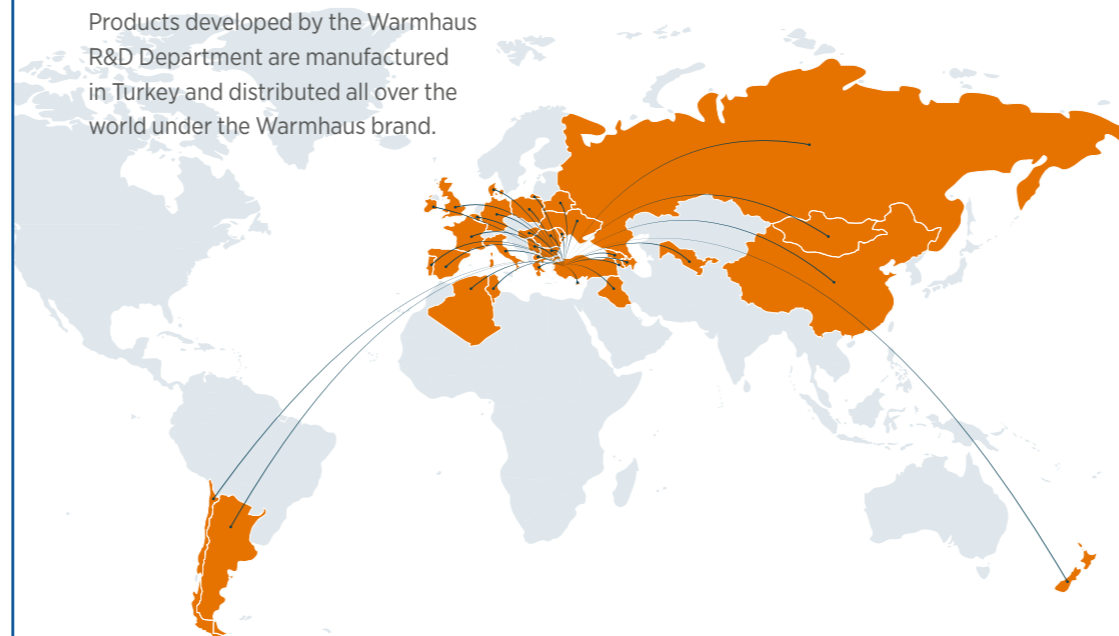
About Warmhaus

Warmhaus an affiliate of Beycelik Holding produces wall hung gas condensing domestic boilers, high capacity commercial boilers and steel panel radiators treasuring from more than 24 years of experience in HVAC industry. Warmhaus is one of the biggest steel panel radiator manufacturers in the world and is heating one of every seven houses in Turkey.

Warmhaus products are warming houses and buildings in more than 36 countries.

Global Heating Brand

Products developed by the Warmhaus R&D Department are manufactured in Turkey and distributed all over the world under the Warmhaus brand.



- ▶ Algeria
- ▶ Argentina
- ▶ Armenia
- ▶ Azerbaijan
- ▶ Belarus
- ▶ Belgium
- ▶ Bulgaria
- ▶ Canada
- ▶ Chile
- ▶ China
- ▶ Denmark
- ▶ England
- ▶ France
- ▶ Georgia
- ▶ Germany
- ▶ Greece
- ▶ Hungary
- ▶ Iraq
- ▶ Ireland
- ▶ Italy
- ▶ Kosovo
- ▶ Macedonia
- ▶ Moldova
- ▶ Mongolia
- ▶ Netherlands
- ▶ New Zeland
- ▶ North Cyprus
- ▶ Poland
- ▶ Portugal
- ▶ Romania
- ▶ Russia
- ▶ Scotland
- ▶ Serbia
- ▶ Spain
- ▶ Tunisia
- ▶ Ukraine
- ▶ Uzbekistan
- ▶ Wales



warmhausofficial warmhausofficial Warmhaus Official warmhaus.com.tr



Safe and Comfortable Hot Water with Smart Safety Technologies

12 Liters
of Hot Water
Per Minute

48 dB
Low Sound
Level

21 kW
Water Heating
Power

Up To %89,2
High Efficiency
($\eta_{\text{v-min}}$)

A
Energy
Class

20 - 30 W
Low Electric
Consumption

ErP Best
NOx Class 6
Category

Compact Dimensions
51,9 Liters
Volume



AquWa 12



Environment-Friendly Low NOx Production
Hermetic Gas Water Heater

AquWa 12 Gas Water Heater

Safe Use with 12 Smart Safety Technology Features

Bad Combustion Safety for situations where waste gas and fresh air mix in the flue connection system

Over-Heat Safety Feature

Hermetic Body that does not consume the ambient air and evacuates the waste gas with a fan

Shutdown Safety Feature in case of blockage in the flue.

Fan Safety Feature, that controls the operation of The Fan (Hall Sensor)

In case of flame loss that may occur due to various reasons, **Flame Loss Safety Feature** that shuts down the water heater

Gas Cut-Off Safety that shuts off the gas flow in case combustion is interrupted

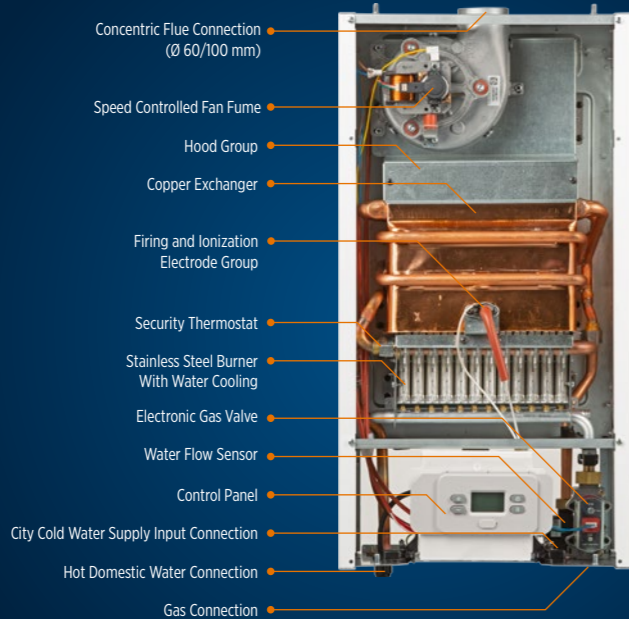
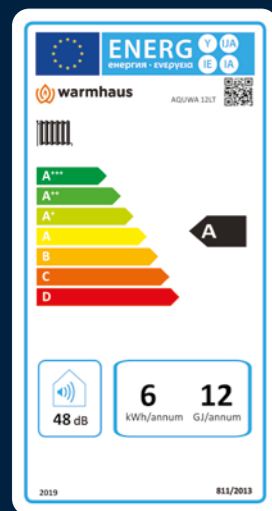
Solar Function Safety Feature, that ensures compatible operation with Solar Energy heating systems containing storage tanks

Frost Protection Function, that is activated when the mains water temperature is lower than +5 °C

Gas Valve Failure Safety Feature

Sensor Failure Safety Feature

Anti-Inertia Function, that decreases the water temperature in case the water temperature exceeds 70°C



Superior Features of AquWa 12



Long Lasting and Durable Copper Heat Exchanger

The heat exchanger manufactured from oxygen-free copper is resistant against brittleness and deformation. Also, it is more environment-friendly since it doesn't require aluminum coating.



Trouble- Free Use thanks to Hermetic Body

Easier installation and trouble-free use against combustion errors that may occur due to air circulation, with its technology that does not require throttling washer in the flue connection.



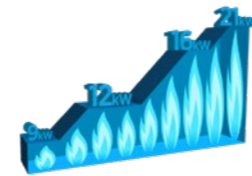
Stainless Steel Burner

- Water cooled design
- Burner with lower NOx and CO emissions lower than class 6 (<56 mg / kWh), determining the lowest NOx level according to the ErP Directives.
 - 37.7 mg/kWh NOx output
 - CO < 85 ppm
- Robust construction with stainless steel material
- High flame modulation



Advanced Electronic Card and Uninterrupted Hot Water Comfort

Continuously produces hot water to prevent temperature fluctuations that can happen because of temperature and flow rate changes during hot water usage. In this way, it provides hot water comfort from 3 liters to 12 liters per minute without any hot/cold water fluctuations.



Wide Interval Burning Modulation

The electronic card continuously controls the gas valve and the variable cycle fan, and ensures that the flame modulation produces power between 9 kW- 21 kW in order to keep the domestic water at the most sensitive level.



Turbine Water Flow Sensor Fast Hot Water

The sensitive turbine water flow sensor, protected by a special filter, detects water flow instantly and the AquWa 12 gas water heater starts to produce hot water quickly.



Very Low Electric Consumption

The powerful modulating fan that discharges the exhaust gas is environment-friendly with a very low electric consumption of 20 to 30 W during operation and only 3 W at stand-by.

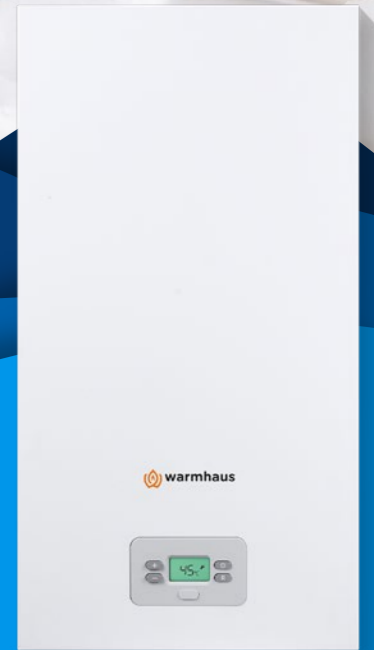


Compact Dimensions and Small Volume

With a height of 638 mm, a width of 336 mm and a depth of 242 mm, the AquWa 12 water heater occupies little space and offers a stylish appearance with a total volume of only 51.9 liters.



12 Liters Per Minute Uninterrupted Hot Water



Technical Data	UNIT	AquWa 12
Rated Heat Load (Minimum/Maximum)	kW	10,0 / 23,5
Rated Heat Power(Minimum/Maximum) Rated Heat	kW	8,90 / 20,7
Efficiency(Minimum / Maximum)	%	89,2 / 88,1
Natural Gas Consumption (Minimum / Maximum)	m³/h	1,03 / 2,43
NOx	Class	6
NOx	mg/kWh	37,7
Seasonal Efficiency Class	Class	A
Seasonal Efficiency	%	77
Hot Water Load Profile	Load Profile	L
Capacity (ΔT= 25 °C)	l/min.	12
Minimum Water Flow	l/min.	3
Water Pressure Maximum	bar	10
Water Pressure Minimum	bar	0,5
Adjustment Interval	°C	35 - 60
Sound	dB	48
Electrical Protection Class		IPX4D
Electric Consumption	W	20-30
Dimensions	cm	638 x 336 x 242
Volume	Liter	51,9
Weight Net	kg	15
Weight Gross	kg	17
Flue Type		C12, C32