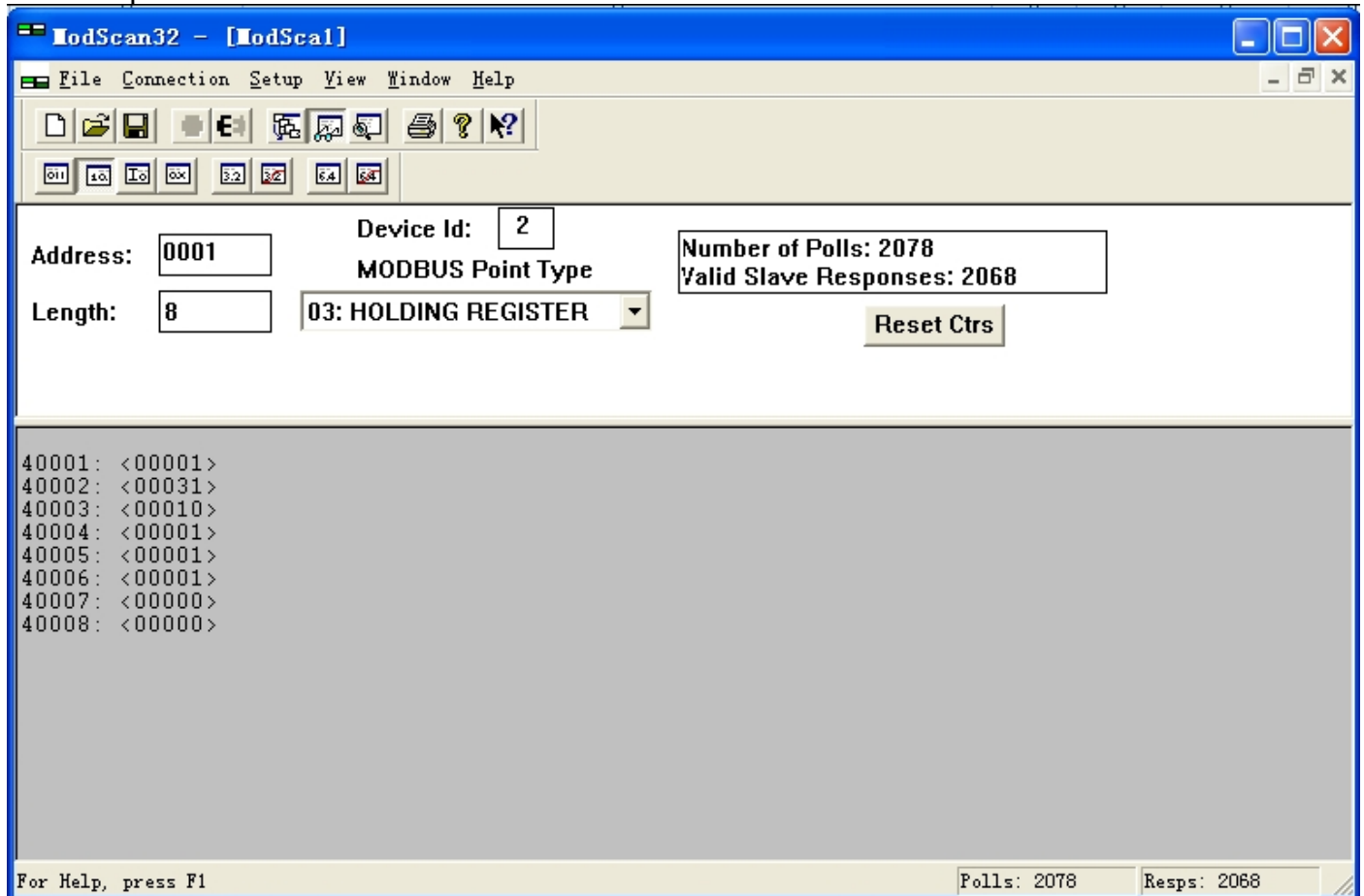


ModBus protocol for TER.TOUCH.S.M

Network protocol instruction:



Communication protocol: Modbus

ID: 1 - 128

Baud rate: 9600 , n , 8 , 1

Readable: field: on/off status, setting temperature, mode, fan speed, room temperature, cooling valve, heating valve, lock station

Writable: field: on/off status, setting temperature, mode ,fan speed, lock station

Field meaning:

40001、 on/off status: on: 00001; off: 00000

40002、 room temperature: hexadecimal format 0 - 50°C (31 means 31 °C)

40003、 setting temperature: hexadecimal format 10 - 30°C (10 means 10°C)

40004、 mode: blowing-in: 00000 ; cooling: 00001 ; heating: 00002;

40005、 fan speed: Low: 00001; Mid: 00002; High: 00003; fan stop : 00000
Auto: 00004, 00005, 00006, 00007

40006、 cooling valve status: open 00001 , close 00000;

40007、 heating valve status: open 00001 , close 00000;

40008、 Lock status : Lock 00001, un-lock 00000;