

**DUCA®**



**Smart size and high  
energy efficiency**

• ZP 15-9-160 • HG 24-12 • CA 200 • CA 1000

ZP 15-9-160

# Booster Pump



## MAIN FEATURES

Max Flow: 1.6 M<sup>3</sup>/h

Max Head: 9m

Rated Flow: 0.5 M<sup>3</sup>/h

Rated Head: 7 M

Max. Input Power: 120 W

Medium Temperature : 2°C~90°C ;

Ambient Temperature : 2°C~40°C ;

Maximum System Pressure : 1.0mpa ;

Protection Grade : ip44 ;

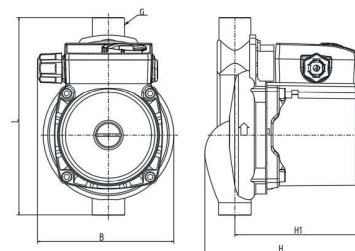
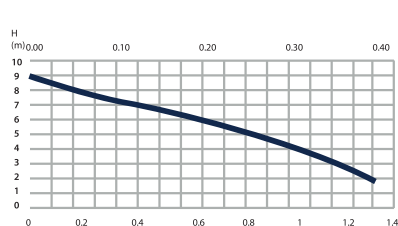
Voltage / Frequency : 220v/50hz

The Voltage Fluctuation Value Should Be Within-10%~+10% ;

Thermal Classification : h Class ;

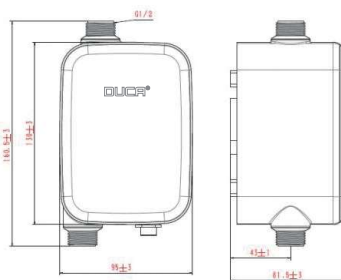
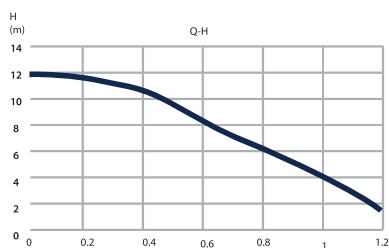
Adaptive Media : clean Water Without Particles And Neutral Ph ;

Installation Method : install Along The Horizontal Direction Of The Motor Shaft.



## MAIN FEATURES

Max Flow: 1.2 M<sup>3</sup>/h  
Max Head: 12m  
Rated Flow: 0.48 M<sup>3</sup>/h  
Rated Head: 10 M  
Max. Input Power: 65 W  
Medium Temperature : 2°C~90°C ;  
Ambient Temperature : 2°C~40°C ;  
Maximum System Pressure : 1.0mpa ;  
Protection Grade : ip44 ;  
Voltage / Frequency : 220v/50hz  
The Voltage Fluctuation Value Should Be  
Within-10%~+10% ;  
Thermal Classification : h Class ;  
Adaptive Media : clean Water Without Particles  
And Neutral Ph ;  
Installation Method : install Along The Horizontal Direction  
Of The Motor Shaft.



DUCA®

HG 24-12

# Booster Pump



CA 200

Intelligent Permanent  
Magnet Variable Frequency

# Booster Pump



## MAIN FEATURES

Max Flow: 3.5 M<sup>3</sup>/h

Max Head: 25 M

Three-stage Regulation:

S1: 10 M

S2: 15 M

S3: 20 M

Rated Flow: 1.5 M<sup>3</sup>/h

Rated Head: 17.5

Max. Input Power: 300 W

## APPLICATION LIMITS

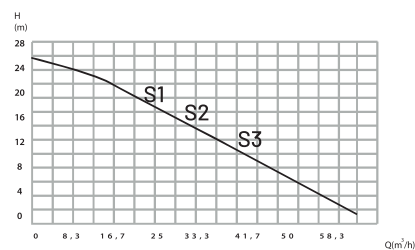
The Conveying Medium Is Clean Water And Other Liquids With Similar Properties To Water

0 Medium Temperature Range 0°C~+60°C;

0 The Ph Of The Medium Is Between 6.5 And 8.5

0 The Volume Ratio Of Solid Impurities Is Not More Than 0.1%, And The Particle Size Is Not More Than 0.2mm

© The Voltage Is Single-phase Ac 220v, And The Voltage Fluctuation range Is ±10% Of The Rated Value.

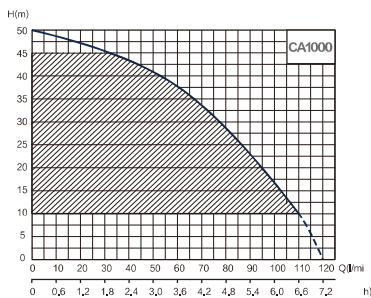


## MAIN FEATURES

Max Flow: 7.2 M<sup>3</sup>/h  
Max Head: 50 M  
Rated Flow: 4 M<sup>3</sup>/h  
Rated Head: 35  
Max. Input Power: 1200 W

## APPLICATION LIMITS

The Conveying Medium Is Clean Water And Other Liquids With Similar Properties To Water  
O Medium Temperature Range 0°C~+60°C;  
O The Ph Of The Medium Is Between 6.5 And 8.5  
O The Volume Ratio Of Solid Impurities Is Not More Than 0.1%, And The Particle Size Is Not More Than 0.2mm  
© The Voltage Is Single-phase Ac 220v, And The Voltage Fluctuation Range Is ±10% Of The Rated Value.



**DUCA®**

**CA 1000**

**Intelligent Permanent  
Magnet Variable Frequency**

# Booster Pump



DUCA®

# HIGHLY INTEGRATED SIMPLE AND FASHIONABLE

The Simple And Integrated Modeling And  
Metallic Color And Luster Demonstrate The  
Fashionable Aesthetic Perception



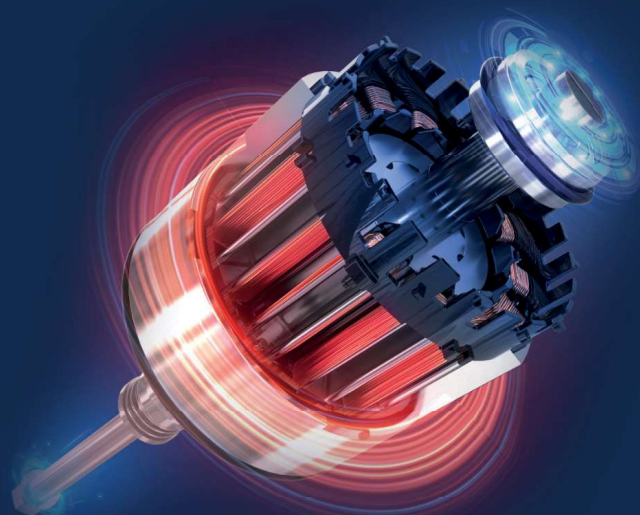
CA

Intelligent Permanent  
Magnet Variable Frequency

**DUCA®**

# HIGH ENERGY EFFICIENCY PERMANENT MAGNET VARIABLE FREQUENCY MOTOR

- Smart Size And High Energy Efficiency
- The Stronger Power, The Huger Flow



CA

Intelligent Permanent  
Magnet Variable Frequency

**DUCA®**

**CA 200**

MEET MULTIPLE  
CONSTANT  
PRESSURE  
WATER NEEDS





**DUCA®**

**CA 1000**

## MEET MULTIPLE CONSTANT PRESSURE WATER NEEDS

**Suitable For Whole 3 Floors  
And Big House And Villa Usage**



DUCA®

## SLIM FIGURE OCCUPY SMALL SPACE

- Compact Design With Less Space For Installation
- Occupy Small Space

HIGH 27.5CM

WIDTH 27.5CM

CA

Intelligent Permanent  
magnet variable frequency

DUCA®

# SLIM FITTING THE SMART SIZE A4 PAPER

---

- Slim Fitting And Size



DUCA®

# 3-GEAR SPEED AT YOUR SWEER WILL

- 3 Models For Speed Regulation Enable To Adjust The Pressure At Your Sweer Will, Which Match Your Water Demand With One Touch
- Leave Domestic Less Water Worries Easily



CA

Intelligent Permanent  
Magnet Variable Frequency